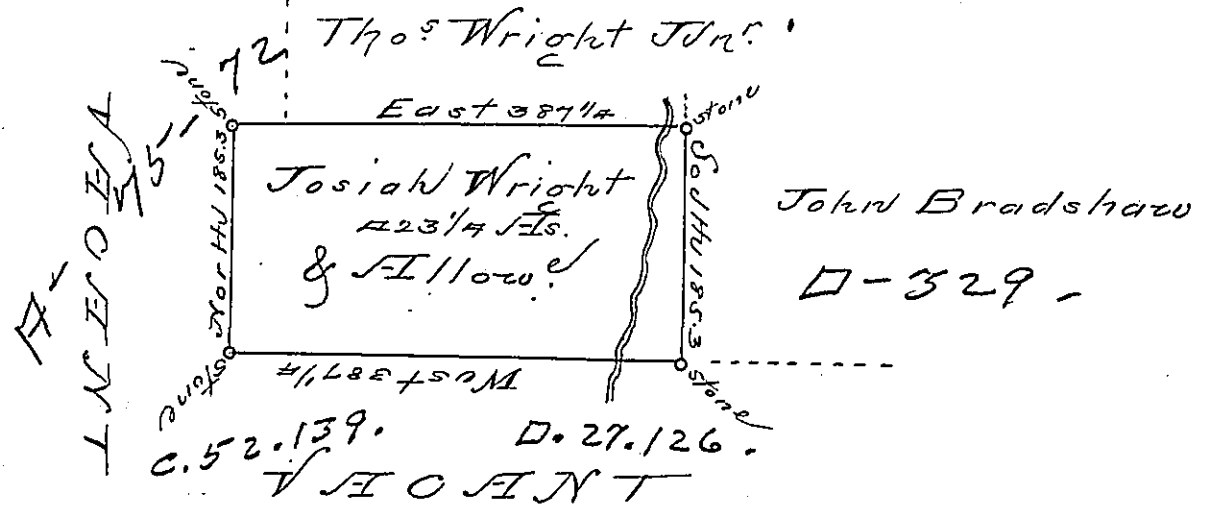


Foster -  
Luzerne.

Pg. 142 -



Draft of a tract of land called  
 Situated on the water of Lehigh joining land sur-  
 veyed for John Bradshaw and Thos Wright Junr  
 in the county of Luzerne containing four  
 hundred twenty three acres 1/4 & allow. of six  
 P. Cent for Roads &c.

Surveyed for Josiah Wright the 14<sup>th</sup> Day of  
 June 1792 in pursuance of a Warrant dated  
 the 4<sup>th</sup> Day of April 1792.

To  
 Daniel Brodhead Esq } by Wm Gray Esq  
 Suror. Genl.

IN TESTIMONY that the above is a copy of the original remaining on file in the  
 Department of Internal Affairs of Pennsylvania, made con-  
 formably to an Act of Assembly approved the 16th day of  
 February, 1833, I have hereunto set my Hand and caused  
 the Seal of said Department to be affixed at Harrisburg, this

— twentieth — day of — February — 1895.

*Isaac R. Brown*  
 Secretary of Internal Affairs.